

# RUNESTONE GO KART ASSOCIATION

## 2024 Rules and Regulations

Listed below are the Runestone Go Kart Association's (RGKA) rules and regulations for 2024. The rules have been written and approved by the elected board members for the 2024 racing season. The compliance of the rules will be enforced to the best of our ability to keep all drivers, track officials, pit crews and spectators safe to ensure that they are able to enjoy the great sport of racing.

### Table of Contents

<b>Mission Statement</b>	<b>1</b>
<b>Membership &amp; Entry Fees</b>	<b>2</b>
<b>Registration</b>	<b>3</b>
<b>Racing Rules</b>	<b>4</b>
<b>Ground Rules</b>	<b>6</b>
<b>Chassis Rules</b>	<b>9</b>
<b>Parent Code of Conduct</b>	<b>11</b>
<b>Classes</b>	<b>12</b>
<b>Wing Kart Rules</b>	<b>15</b>
<b>RGKA Information</b>	<b>24</b>

**\*\*THE ASSOCIATION RESERVES THE RIGHT TO AMEND ANY RULE OR REGULATION AT ANY TIME AND IN ANY WAY IN THE INTEREST OF GOOD SPORTSMANSHIP AND SAFETY FOR EVERYONE\*\***

### Our Mission Statement

At Runestone Go-Kart Association we provide a safe, exciting and rewarding experience for our drivers, race families, and spectators. We offer a well-maintained track and a variety of classes that cater to racers of all skill levels, from beginner to experienced. Our mission is to develop young individuals by providing them with the tools and skills they need to become well-rounded and responsible individuals both on and off the track. We are committed to celebrating the achievements of every participant while promoting sportsmanship to maintain our family friendly atmosphere.

*The essential elements of character building and ethics in the Runestone Go Kart Association mission statement are embodied in the concept of sportsmanship and six core principles:*

- 1) *Trustworthiness*
- 2) *Respect*
- 3) *Responsibility*
- 4) *Fairness*
- 5) *Caring*
- 6) *Good Citizenship*

## **Membership and Entry Fees**

### **Membership Fee:**

- First Driver: \$70.00
- Additional Driver in same family: \$40.00
- Waived for First Year Rookie Class Drivers
- This includes a RGKA t-shirt and the driver's meal at the year end banquet. It is a great way to support the track and recognize your racer(s).

### **Driver Registration (Per Race):**

- With membership: \$35.00
- Non-member: \$45.00
- Driver's pit pass is included with registration.

### **Additional Class:**

- \$20.00 for registered driver

### **Pit Pass:**

- \$15.00 for Age 8 and up
- \$5.00 for Ages 2 - 7
- Free Admission for Under 2 yrs old, must be signed in and have a wristband issued.

All waivers and code of conduct forms must be signed by a parent or legal guardian.

Each registered member is entitled to one vote per paid membership at the associated meetings and banquet.

With each paid RGKA membership, the driver will receive a year end trophy if a total of five points events were raced.

Race fee will be determined on a per race basis by the board for Non Points Races.

## Registration

- 1) Raceceivers and Transponders **are mandatory** for all karts racing at RGKA. Both are available for nightly rental. Please rent these out at the registration shed.
- 2) Transponders to be mounted no further forward than the center of the front spindles. RGKA recommends mounting via the transponder pouch attached to the bottom of the steering column.
- 3) Karts and drivers must register for each event between 5:00 P.M. and 6:15 p.m. Anyone registering after 6:15 p.m. will not draw a number and will start in the back for both heat races.
- 4) Start times :
  - Registration 5:00 PM to 6:15 PM
  - Hot Laps: 6:00 PM one session only per class
  - Mandatory pit meeting: 6:45 PM
  - Racing starts: 7PM
- 5) One number will be drawn for each driver per class. A parent must be present when the driver draws the number and registers the kart.
- 6) Ages for all classes are determined by the driver's age as of May 1, 2024. A birth certificate can be requested at any time during the race season.
- 7) All drivers must sign in at each event. The waivers and code of conduct must be signed by a parent or legal guardian prior to participating at any event.
- 8) Lineups:
  - Heat 1. Lower numbers drawn at check-in start towards the front.
  - Heat 2. Invert the heat 1 lineup
  - Feature
    - Lineup determined by the points from heat 1 and 2
    - In case of a tie, the lowest number drawn at check-in will start closest to the front.
    - The highest point drivers will be in the A feature and will be the final race of each class.
- 9) Our Rookies class is designated for drivers who are ages 5 to 8 years old and have little or no experience racing a go kart. This is a beginner class to have fun and develop driving skills. No points will be accumulated for the rookie class. A Rookie Driver may be asked to move up to the Sportsman or R-Box class at the board's discretion. If a Rookie Driver is asked to move up a class, it will not be counted as their first year in the Sportsman or R-Box class.
- 10) Rookie drivers will not be allowed to run in Wing classes while competing as a Rookie.
- 11) If a driver is allowed to run a race out of their age bracket, they will only be allowed to run that class for one race night. The driver must move to their appropriate age bracket after the one night introduction, at Board discretion.
- 12) Once a driver has entered into a class for 1 or more races, they will no longer be able to enter a class lower than the one they raced, at Board discretion.

## Racing Rules

- 1) The flagman will have full control of the races subject to the rules. All decisions are final. No protest will be considered. No one will be allowed to personally confront the flagman or use profanity about a call during the races. Such behavior will be considered unsportsmanlike conduct. Please see **rule GR21** for consequences.
- 2) All karts must be lined up in the staging area for their race. If you are not in the staging area before your race you will start in the back. If there are mechanical problems between lineup and the green flag, the kart will have **two minutes** to repair and will be placed to the rear. If the kart is not repairable it must leave the track.
- 3) While on the track, drivers must remain in their karts, unless directed otherwise. Drivers leaving their karts may be disqualified from the race.
- 4) Drivers in any cageless class shall raise one arm over their head to signal following drivers when slowing abnormally, applying excessive brake, pulling off course, failing to accelerate normally, or warning other drivers of an impending hazard.
- 5) A driver, when being overtaken by a faster kart, should continue in a straight line and not swerve to one side or the other while being passed.
- 6) A kart stopping once on the track for mechanical reasons will have **two minutes** to repair and will be charged with a yellow flag and put to the rear. The two minutes will start when the kart reaches the staging area. The kart must leave the track if the kart is not repairable in the two minute time period and will receive last place points for that race. Any kart leaving the track will not be allowed back into that race.
- 7) Any kart asked to leave the track after the green flag has dropped for a mechanical or equipment failure that is deemed as a safety hazard, will receive last place points for that race.
- 8) No kart will race with a fuel leak or other items that the flag personnel feels is a safety hazard.
- 9) If a kart is involved in an accident and the flagman determines the kart was not at fault for the caution, they will have **two minutes** to repair their kart and will retain his or her position. The kart must leave the track if not repairable in the two minute time period.
- 10) Any kart causing a restart will be sent to the rear. This will include initial double wide starts or restarts. Each race will be allowed two cautions for the initial start of a race. After the second caution, the karts will line up single file. Any driver **causing two cautions** will be disqualified from that race and must leave the track receiving last place points for that race. Any **rookie causing three cautions** will be disqualified from that race and must leave the track.
- 11) On a restart, karts will be lined up in the position they held upon completion of the last full lap, as adjusted by the flagman for kart(s) sent to the rear.
- 12) When the yellow caution occurs all karts must come to a slow place, following instructions by the flagman through the raceceiver. Any karts needing to be restarted may do so without penalty only two times. Karts may be started only; no repairs or tuning will be allowed under a caution. Any kart caught making repairs or changing parts on a kart will be disqualified. This includes tire pressure and chassis adjustments.

- 13) All karts must stop when the red flag is out.
- 14) In the event of an accident on the track, only the track first aid personnel, track officials, and the driver's parents will be allowed on the track. All karts must stop on a red flag and will not proceed until a track official gives the okay. No one will be allowed on the track until all karts are completely stopped.
- 15) Any driver that receives a black flag for aggressive driving or unsportsmanlike behavior will be asked to leave the track and will not receive any points for that race.
- 16) In the event of an accident on the last lap after the checkered flag is given, all karts including the karts in the accident will be scored as they crossed the finish line in the last completed lap. The kart that the flagman determines as the cause of the accident will be charged with the caution and will receive last place points.
- 17) The track may tech a kart at any time and in any manner at the tech personnel's discretion. 18. If a substitute kart is utilized for backup, Tech must be notified prior to entering the race and must have successfully passed tech inspection. If a backup kart is utilized during the event, the kart will go to the rear of the next race.
- 18) When an engine is changed after the heat/qualifying races, a RGKA tech personnel must be notified. The motor must be brought to the tech shed before the feature event begins. If that kart places in the top two positions, both motors are subject to tech. Components such as the carburetor, restrictor plate, and pipe must stay intact with the motor that comes out of the kart unless they are used on the replacement motor in which the tech personnel must be notified.
- 19) The top three karts must scale and report to the tech area at completion of the race. The top two karts out of every A Feature race will be teched at the tech personnel's discretion. Each 3rd Place finisher from the A Feature in every class will draw a tech item at the end of the race. The top two karts will be teched and the third kart will stay in the tech area in case of a disqualification.
- 20) At the end of the season, the track will determine the points champion for each class by throwing out ONE lowest point night. ONE throw out night is granted to give the drivers an opportunity to do other sports, vacation, or race at another track. A disqualification due to a tech infraction will not be permitted as a throw out night. If there is a tie for championship, the tie breaker will go in the following chronological order:
  - a) Number of feature wins
  - b) Number of second place feature finishes
  - c) Number of third place feature finishes
  - d) Heat race wins.

## Ground Rules

- 1) Pit passes are required in the pit area at all times.
- 2) Prior to entering the pit area, all drivers and pit crew must pay all entry fees and sign a notarized waiver and code of conduct. Waivers for any minor (all persons under the age of 18), driver or non-driver, must have a parent or legal guardian sign all waivers including a one time minor waiver and pit pass waiver for every race event.
- 3) No alcoholic beverages are permitted on the premises during races. Anyone who has been determined to be under the influence of drugs or alcohol will not be allowed to participate in any of the competitions. Anyone who has been found or is suspected of being under the influence of drugs or alcohol will be denied entrance to the pit area or asked to leave if found after admittance and will be subject to GR21.
- 4) **Required driver equipment includes the following:**
  - a) . All drivers must wear a driving suit or jacket (no windbreakers or hooded sweatshirts)
  - b) A properly fitted, full-face helmet with shield; SNELL 2020 approved or better
  - c) Racing neck brace restraint is required
  - d) Driving gloves
  - e) Full toe and heel shoes
  - f) Long pants
  - g) If hair is longer than shoulder length, hair must be tied and tucked into the helmet
  - h) Chest protectors are **mandatory** in all cageless classes
  - i) Rookie Cage and Wing Classes: Wrist restraints are required w/ attachment to lap belt connector. (Please ask RGKA Board Member if you have any questions on attachment)  
**\*\*Safety equipment and restraint systems are subject to tech at any time\*\***
- 5) Kart numbers are registered on a first come first serve basis. Previous drivers will have first pick for numbers. Newer drivers may be required to add a letter along with their number for scoring purposes. Drivers may enter only one number per class. Drivers will drive only that number in which they register and no other driver may drive that number. It is recommended that the kart number be black, white, or contrasting colors from the background color to assist the scoring personnel.
- 6) The scoring personnel should be notified if someone other than a registered driver is driving the kart. The points go with the driver, not the kart. The score personnel should also be notified if a kart decides to scratch from a race so the lineup can be updated before the race starts.
- 7) On a low kart count night, the board may decide to run combined classes, but score based on their registered class.
- 8) If there is inclement weather or time restrictions, the RGKA board may implement time saving measures which may include but is not limited to reducing laps for each class.
- 9) In the instance of a rainout, a make-up day will be announced. If the race event is rained out after all heat races are completed, the program will continue on the make-up day. The races will resume at the point of interruption or at the RGKA boards discretion.  
**\*\*Check the RGKA Facebook page and/or website for details regarding rainouts\*\***
- 10) The track is closed at all times other than racing events. Any kart caught on the track other

than for a scheduled event, will be banned.

- 11) All trailers must be equipped with a fire extinguisher approved for methanol.
- 12) No bicycles, motorized vehicles, scooter, or skate boards will be allowed in the pit area or on the track.
- 13) No dumping of fuel, oil, tire prep, or any other chemicals on the fairground property.
- 14) No smoking will be permitted in the staging area at any time.
- 15) All karts must scale after each race. Failing to scale or in the instance of the kart being underweight, will result in the loss of points for that race.
- 16) Runestone Go Kart Track follows NKA engine rules.
- 17) Tech infractions will result in the loss of all points and no trophy will be awarded for that night of events. The second offense will result in the loss of **ALL** points and a suspension for the remainder of the season.

***\*\*During a suspension, a driver is not allowed to run any other classes\*\****

- 18) At the last event of the season, if a kart is found to have a tech infraction they will lose its points for that night and the previous race event attended. ***\*\*This night will not be allowed to use as a throw out night at the end of the season\*\****
- 19) A kart or engine may be protested upon the deposit of \$350.00 cash by the protesting party. The protestor must be a driver or a crewmember of a kart in the same class and must have raced that night's event. The protestor must contact a board member or tech personnel prior to the kart leaving the tech area. The party who has protested a kart must take his/her kart to the tech area until the tear down begins. If no discrepancies are found, \$250.00 is forfeited to the kart owner who was being protested and \$100.00 retained by RGKA to complete the teardown. If the protest is upheld, \$250.00 will be returned to the protesting party, \$100.00 retained by RGKA to complete the teardown, and RGKA will confiscate any and all illegal parts. Only the tech personnel, RGKA board members, and two members from both the protested and protestor's parties will be allowed in the tech building during the teardown process. A protest will be disallowed if any kart, including the protested party or the protestor's party, leaves the tech or restricted area. If a kart leaves the tech area without authorization, it is considered a violation and the kart will be deemed as an engine infraction. If there are any discrepancies with the protest, the RGKA board and tech personnel will retain the items in question for a third party opinion.

***\*\*Please see rule GR17 for consequences for having a tech infraction\*\****

- 20) Denying a teardown will result in the same consequence as a tech infraction.
- 21) Any unsportsmanlike conduct; i.e. swearing, arguing, or obscene gestures by a driver, crew member, or person representing a kart; will be penalized as follows:
  - a) If there is physical violence by any person at the track:
    - i) Immediate ejection from the race.
    - ii) Authorities will be called immediately.
    - iii) Lifetime ban of the offender.
  - b) Any acts of unsportsmanlike conduct by a driver or crew member:
    - i) First Offense:
      - (1) Immediate ejection from the race. If the person(s) refuse to leave after the first demand to leave, authorities will be called immediately.
      - (2) Two race day suspension. A race day is the calendar date on which one or more races are held.
    - ii) Second Offense:

- (1) Suspension for the remainder of the season.
  - (2) Third Offense:
  - (3) Lifetime ban of the individual.
  - (4) If the offense is caused by a board member all consequences above and removal from the board.
- c) The board members reserve the right to ask anyone to leave, temporarily or permanently if the board believes that someone is not adhering to the rules of the track, the spirit of fair play, and dealing appropriately with another volunteer of our organization. The board will not allow any person to ruin the spirit of fun and child development for the rest of the racers and their race group.
- 22) All decisions by the board and its members at the track, or at a meeting are final and will not be discussed after the decisions are made.
- 23) Dispute resolution of any race issue:
- a) No flagman calls, finish positions, points position or any other race dispute will be allowed to be discussed the night of any race. All calls are final.
- 24) Individual board members do not have the authority to make decisions for the association. If an issue needs further discussion the person with the issue must request in writing an agenda item be added to the next board meeting. All information and data related to the issue (video, explanations, etc.) must be provided at least 1 week prior to the board meeting. Discussion by phone with individual board members is not allowed.
- a) The person with the issue will be allowed an uninterrupted 5 minutes to explain their issue at the board meeting.
  - b) Board members have the opportunity to ask questions and request more answers.
  - c) The person with the issue cannot interrupt the board while they are discussing the issue.
  - d) The board may make an immediate decision, choose to delay a decision, or take no action on the issue.
  - e) All decisions are final.

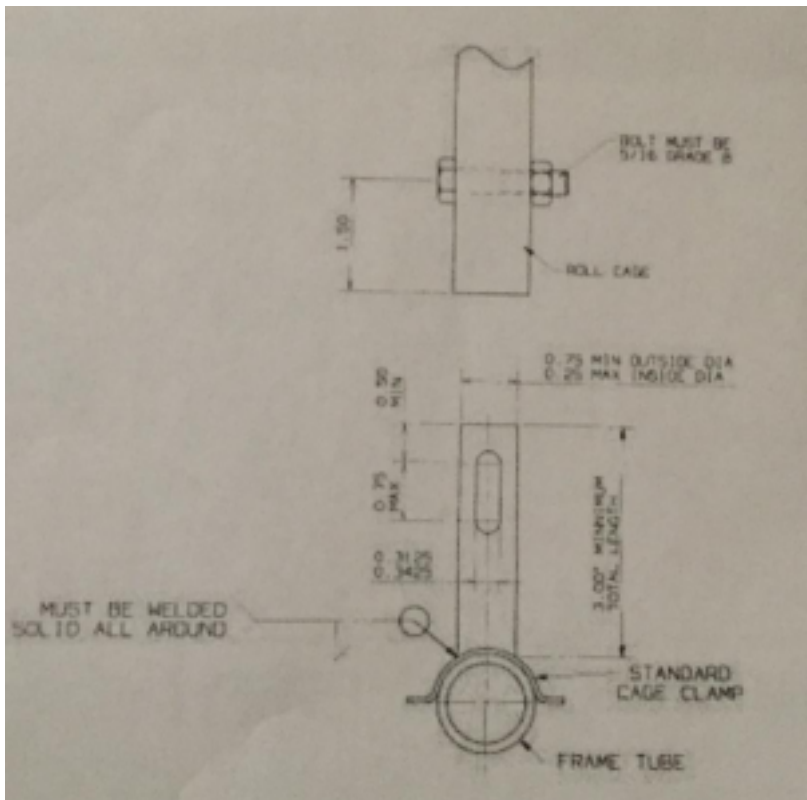


## Chassis Rules

- 1) No kart will be allowed to participate in the racing event if the kart has not been teched. The tech official will place a RGKA Tech sticker on the body of the kart to show proof of tech. **Sticker must be present to race.**
- 2) Bumpers for all classes are **required.**
- 3) A sturdy nerf bar in front of the rear wheels is required on each side of the kart.
- 4) **Tires:** The tire rim size is not to exceed **6 inches** in diameter.
  - a) Slicks are mandatory for Sportsman, JR1 and JR2 classes
  - b) Treaded tires are mandatory for Wing classes (NO PREP ALLOWED)
  - c) Open tire rule for Rookie and Adult classes: Slicks or Treaded (NO prep allowed on treaded tires)
- 5) All weight added to meet minimum kart/driver weight requirements shall be bolted to the kart or seat with a minimum 5/16" or 8mm bolt. No more than 7 pounds permitted per bolt. Weight over 7 pounds will require a minimum single 3/8 bolt, or two 5/16 bolts. **All bolts are to be double nutted**, with threads of at least 1/4" still visible. Drilling and using cotter pin/safety wire in addition to the double nuts is highly recommended. A minimum of a 1.50 inch washer must be on the seat side of the weight bolted to the seat. All weights are required to be painted white with the kart number on the weights in black. If a weight falls off during any event, the kart will be disqualified from the event and will receive no points for that race event.
- 6) All caged karts must be equipped with at least a four-point roll cage. The main bar must be steel tubing of no less than **1 inch O.D. x 0.083" Wall thickness.**
- 7) The cage must be of sufficient height and width so that the driver's head, with a helmet on, leaves a minimum of 2 inches safety clearance from the top and to any side bar. An additional crossbar over the driver's head is required.
- 8) The width of the cage must be at least as wide as the driver's shoulders, plus 4 inches of clearance at shoulder height.
- 9) Mandatory safety equipment on all caged karts:
  - a) Seat belts (in good condition)
  - b) shoulder harness
  - c) wrist restraints and leg restraints (leg restraints may either be a crossbar or leg straps). No bungee cords are allowed.
  - d) Seat belts must be fastened to the main frame of the kart with a minimum of a .375 inch (3/8") bolt that is grade 8.

**The RGKA Tech personnel and/or RGKA board must approve these safety items.**
- 10) All karts must have an adequate belly pan from the front of the seat forward.
- 11) Brakes must be in good operating condition with two wheels locking. Rear brakes only. Wheel stub brakes are not allowed.
- 12) Both brake and throttle must be operated by the driver's feet and must be within easy reach of the driver
- 13) A tie strap on the plug wire is mandatory.
- 14) A sturdy chain guard is required to extend .50 inch beyond the clutch and have a minimum overall length of 6 inches. There may be a maximum of 1 inch between the edge of the chain guard to the seat or have a side shield.

- 15) Kart number must be placed on the front, back, and both sides of the kart. The numbers must be clearly legible. Side numbers must be at least 6 inches in height. Rear and front numbers must be at least 4 inches in height. The numbers must be of a contrasting color to the background color.
- 16) Gas tank or engine components cannot extend past the rear bumper.
- 17) Bolts and studs securing the header must be safety wired. Mufflers are mandatory and must be safely wired through the hole in the header brace. Safety wire should pass through the perforations on the end of the muffler. Do not weld on the muffler or drill holes in the muffler. Mufflers must be clamped to the header. Headers must be wrapped.
- 18) No ratcheting or limited slip rear hubs are allowed.
- 19) Wolf plate is required (Protection plate over disk brake rotor), not required on karts with brake on motor side.
- 20) Fuel testing: RGKA will test gas and methanol with a density tester per sport standard methods.
- 21) Restrictor Plates: All Animal Classes will run APS Plates. All Clone Classes will run ARC Plates.
- 22) No springs, shocks, or struts may be mounted to the cage. Sliders and half heim joints are allowed. The cage mounting, integrity, and welds will be reviewed and teched. Below is an example of a slider:



## Parent Code of Conduct

As a Parent:

- I will not force my child to participate in racing.
- I will remember that children race to have fun.
- I will inform the flagman and officials of any physical disability or ailment that may affect the safety of my child or the safety of others.
- I will learn the rules and the policies of the Runestone Go Kart Association.
- I will be a positive role model for my child and encourage sportsmanship by showing respect and courtesy and by demonstrating positive support for all drivers, crew members, flagmen, officials, and spectators at every race.
- I will not engage in any kind of unsportsmanlike conduct with any driver, crew member, flagman, officials, or spectators such as booing, taunting, refusing to shake hands, or using profane language or gestures.
- I will not encourage any behaviors or practices that would endanger the health or wellbeing of any other person.
- I will teach my child to race by the rules and to resolve conflicts without resorting to hostility or violence.
- I will demand that my child treat other racers, crew members, flagmen, officials, and spectators with respect regardless of race, creed, color, sex, or ability.
- I will teach my child that doing one's best is more important than winning so that my child will never feel defeated by the outcome of a race or his/her performance.
- I will praise my child for competing fairly and trying hard and make my child feel like a winner every time.
- I will never ridicule or yell at my child or other participants for making a mistake or losing a race.
- I will emphasize skill development and practice racing through hot laps and how they benefit my child over winning. I will also de-emphasize races and competition in the lower age groups.
- I will promote the emotional and physical wellbeing of the racers ahead of any personal desire I may have for my child to win. I will respect the officials and their authority during races and will never question, discuss, or confront the flagman or officials during any race. Also, if needed I will take time to speak with the flagmen or officials after all races are completed for the evening.

***\*\*If not followed see GR21\*\****

## 2024 CLASS STANDARDS

2024 Runestone GoKart Association Classes					
Class	Age	Weight (lbs)	Motor	Specs	Tires
Rookie Caged (Non Points Class)	5-8	265	IKF Flathead NKA Clone NKA Animal	Flathead : Horstman .425 Purple Plate Alcohol Clone : ARC or Speed Karts .375 Red Plate, Pump Gas Animal : APS .225 Purple Plate, Alcohol	Slicks/Treaded (Any Brand)
Sportsman	7-9	235	NKA Clone	Clone : ARC or Speed Karts .375 Red Plate*	Slicks (Any Brand)
Junior 1	8-11	275	NKA Clone	Clone : ARC or Speed Karts .425 Green Plate*	Slicks (Any Brand)
Junior 2	12-15	320	NKA Clone	Clone : ARC or Speed Karts .550 Blue Plate*	Slicks (Any Brand)
Adult Open	15 & Up	375	Unrestricted	4 Cycle Only, No shifters	Slicks/Treaded (Any Brand)
R-Box Wing	5-8	245	Clone (See RGKA rulebook for full specs)	Clone : ARC or Speed Karts .425 Green Plate; 6.5 OHV 196cc (No Kohlar, Honda, or Predators) <b>Pump Gas Only</b>	Treaded (Any Brand) <b>No Prep</b>
R-Box Pro Wing	8-11	270	Clone (See RGKA rulebook for full specs)	Clone : ARC or Speed Karts .550 Blue Plate; 6.5 OHV 196cc (No Kohlar, Honda, or Predators) <b>Pump Gas Only</b>	Hoosier Treaded <b>No Prep</b>
BP Wing (Junior Wing)	9-13	300	Clone (See RGKA rulebook for full specs)	Clone : 6.5 OHV 196cc 168-f Clone Engine (No Kohlar, Honda, or Predators) <b>Pump Gas Only</b>	Hoosier Treaded <b>No Prep</b>
Intermediate Wing	12-16	350	Clone (See RGKA rulebook for full specs)	Open Clone : 6.5 OHV 196cc (No Kohlar, Honda, or Predators) <b>Pump Gas Or Methanol</b>	Hoosier Treaded <b>No Prep</b>
*Flat Kart Clone Classes : Pump Gas 87 or 91 Octane Only; Max 3/4" OD Pipe; Mini B-91 Muffler					
Class Age determination is May 1, 2024. Drivers within one year of minimum class age may request class entry from RGKA Board per Rulebook guidelines					
All classes are subject to change or be combined based on kart counts, ect. Must have 4 or more karts to score a class					
Race format will be 2 heats & 1 feature					

### Rookie Caged

- 1) Kart Numbers
  - a) Kart Number must be visible on all 4 sides.
  - b) Minimum height of the number itself is 6" and black in color.
  - c) LOCAL OPTION – Numbers of alternate colors will be allowed, provided the number is easily visible from the scoring tower and does not impede the scorekeepers function. Absolutely no metallic or silver numbers.
- 2) Cage Standards: All Karts will be equipped with functional roll cages constructed of suitable material, craftsmanship, and design, to protect the driver in the event the kart departs its normal racing attitude. Cage structural tubes must be at least 1.0" O.D. with .083" wall mild steel or stronger tubing.
  - a) Cage may be clamped to frame or spring loaded and properly secured. Cage may not be welded to the frame at any point. Cage must be mounted in four spots, two ahead of the driver seat, and two behind the driver seat. Subject to track official inspection
  - b) The cage must be of sufficient height and width so that the driver's head, with a helmet on, leaves a minimum of 2 inches safety clearance from the top and to any side bar. An additional crossbar over the driver's head is required.
  - c) The width of the cage must be at least as wide as the driver's shoulders, plus 4 inches of clearance at shoulder height.
- 3) Chain guards which extend ½ inch beyond the clutch, minimum 6-inch overall length and

maximum of 1 inch between edge of chain guard to seat, side shield is required.

- 4) Clutch use is mandatory, and is determined by the specific engine rules for posted NKA classes.
- 5) All fuel line connections must be secured by clamps or similar.
- 6) Plug Wire Disconnect: A vertical plug wire disconnect (tie strap) must be present.
- 7) Mufflers are mandatory for all classes, and must be safely wired through holes in the header brace. Must have safety wire through the perforations on the end of the muffler. Muffler must be clamped to the header, and header wrapped.
- 8) Tires:
  - a) The tire rim size is maximum **6 inches** in diameter.
  - b) Caged Kart Rookie classes may use slick or treaded tires.
- 9) Tire prep at track is permitted for slicks open tire rule.
- 10) Brakes must function properly with two wheels locking. Wheel Stub brakes are not allowed. Both brake and throttle must be operated by the driver's feet.
- 11) Wolf Plate is required (Protection plate over disk brake rotor).
- 12) Floorpan from the front of the seat forward must be present and properly secured. No void large enough for any part of the driver's body to inadvertently pass through shall be permitted.
- 13) Rear Bumpers are required for **all classes**. Full width rear bumpers are not mandatory, but are recommended. *For all Rookie through JR 2 karts without a full width bumper, a Hopper Stopper is required behind the left rear tire.*
- 14) Fuel tank and engine components must not extend beyond the rear bumper.
- 15) Seats must be mounted securely to a minimum of 4 points to the chassis, with two at the front and two on the sides to solid metal frame or adjustable mounts.
- 16) Seat Belts:
  - a) All karts must have seat belts (must be 2016 or newer), shoulder harness, arm restraints and leg restraints (leg restraints may either be a crossbar or leg straps). No bungee cords or cut or frayed seat belts allowed.
  - b) Seat belts must be fastened to the main frame of the kart with a minimum of a .375- inch (3/8") bolt that is grade 8. The AKS Tech personnel and/or AKS board must approve these safety items.
  - c) Arm Restraints are mandatory and must attach to the seat belt system, and not allow any part of the driver's hand or arms outside the cage when fully extended.
- 17) Driver's Suit: Must be SFI 3.2A1 rated or better. This is a fire resistant one or two piece suit.
- 18) Use of approved helmet, neck collar and gloves is mandatory. See Safety section for safety gear specifications.
- 19) Steering Wheel: Quick release hub/steering wheel is highly recommended.
- 20) Drivers in the Rookie Caged Class are not permitted to also run in a Wing Class.

## Flat Karts

- 1) Please review **NKA 2024 Sporting Regulations Section 20.3, Speedway classification**
- 2) Kart Numbers
  - a) Number Panels - Minimum width 9" minimum height 7" as measured on the surface of the panel. Number panel must be white or yellow.
  - b) All competition karts must be equipped with four number panels :

- i) 1 on the front of the kart
    - ii) 1 on each side
    - iii) and 1 on the rear
  - c) Minimum height of the number itself is 6" and black in color.
  - d) LOCAL OPTION – Numbers of alternate colors will be allowed, provided the number is easily visible from the scoring tower and does not impede the scorekeepers function. Absolutely no metallic or silver numbers.
- 3) Chain guard which extends ½ inch beyond the clutch, minimum 6-inch overall length and maximum of 1 inch between edge of chain guard to seat, side shield is required.
  - 4) Clutch use is mandatory, and is determined by the specific engine rules for posted NKA classes.
  - 5) Plug Wire Disconnect: A vertical plug wire disconnect (tie strap) must be present.
  - 6) Mufflers are mandatory for all classes, and must be safely wired through holes in the header brace. Must have safety wire through the perforations on the end of the muffler. Muffler must be clamped to the header, and header wrapped.
  - 7) Nerf Bars in front of the rear wheels, both sides of the kart are required.
  - 8) Tires:
    - a) a. The tire rim size is maximum **6 inches** in diameter.
    - b) Slicks are mandatory for all Caged/Flat Kart classes.
    - c) LOCAL OPTION : Tire prep at track is permitted for slicks open tire rule.
  - 9) Brakes must function properly with two wheels locking. Wheel Stub brakes are not allowed. Both brake and throttle must be operated by the driver's feet.
  - 10) Wolf Plate is required (Protection plate over disk brake rotor).
  - 11) Floorpan from the front of the seat forward must be present and properly secured. No void large enough for any part of the driver's body to inadvertently pass through shall be permitted.
  - 12) Rear Bumpers are required for **all classes**. Full width rear bumpers are not mandatory, but are recommended. *For all Rookie through JR 2 karts without a full width bumper, a Hopper Stopper is required behind the left rear tire.*
  - 13) Fuel tank and engine components must not extend beyond the rear bumper.
  - 14) All fuel line connections must be secured by clamps or similar.
  - 15) Seats must be mounted securely to a minimum of 4 points to the chassis, with two at the front and two on the sides to solid metal frame or adjustable mounts.
  - 16) Steering Wheel: Quick release hub/steering wheel is not permitted.
  - 17) **Drivers in the Rookie Flat Class are not permitted to also run in a Wing Class.**

## Wing Classes

*(Adopted from English Creek Speedway)*

### ALL WING CLASSES:

- 1) Hoosier grooved tires only on all four corners of the kart. D50 or D55 must be used on the right rear. Other corners are optional. RR must durometer minimum of 50 Prior to race.
- 2) Drum or Disc clutch only in all clone classes.
- 3) Chain guards are mandatory. Appropriate design to prevent injury to the arm. If in doubt, see safety tech.
- 4) Brakes must be in good working condition at all times.
- 5) All pipes are no tech, no loop pipes allowed. All pipes must stay within the rear axle and point down or must return into the tail.
- 6) All pipes must be approved by track officials.
- 7) If your pipe/muffler falls off during an on track session you will be black flagged and given last place points. If it is broken, loose, cracked, missing, etc. post-race you will be disqualified and given last place points.
- 8) Frames must be of kart configuration. Not to exceed 90" in overall length. No EXCEPTIONS.
- 9) No nose wings allowed.
- 10) Cages are mandatory. Must be for the protection of the driver. Not for looks or wing mounts. Cage must be mounted with 4, grade 5 bolts or pins at all times.
- 11) NO CAGE SHOCKS OR STRUTS ALLOWED.
- 12) A frame type cage support is recommended. Should be a single cross tube used, it must be a minimum of 12 inches from the top of the down tube. No bars, other than regular Nerf bars, may extend out past the outer edge of the tire on either side of the kart.
- 13) No body side enclosures will be allowed anywhere (on the cage or chassis) for safety reasons. Nerf bars may be covered, but covering may not be attached to the frame, nose cover, or roll cage. Must be attached to the nerf bar only. Driver must have vision 360 degrees from the driver seat and must be able to exit from the LH side or RH side if needed.
- 14) Minimum standard for roll cage (tubing thickness): All classes  $\frac{3}{4}$ " .083 chrome moly or 1" .06 chrome moly or 1".083 steel. No exotic steel. Roll cage must be securely fastened with grade 5 or better bolt or pins in at least four spots.
- 15) WING DIMENSIONS (ALL WING CLASSES)
  - a) Center panel 36" Long 32" Wide
  - b) Right side panel 40" Long X 14" Wide
  - c) Left panel 40" Long X 20" Wide
    - i) All Dimensions are +/- 3".
- 16) No cockpit Adjustable Wing Sliders.
- 17) Uppermost part of the kart and wing not to exceed 76" (all wing classes).
- 18) Bodies can be any material, except wood. No sharp edges or protruding parts on any part of the kart.
- 19) Wing, hood, and tailpiece must be like a sprint car in appearance, attached securely to the kart

and are mandatory in all wing classes.

- 20) Tailpiece protection: If the top of the rail section protrudes above the seat, the tail must be padded. The Hood and Tail section must be securely attached to the Kart.
- 21) Suicide doors: No suicide bars. Side bar must open from the rear. Left side protection is recommended.
- 22) Fuel line location cannot be closer than 2" to any of the exhaust systems at any time and shall not be above the exhaust. If closer than 2", the fuel line must be insulated. Fuel lines must have ample slack for cage movement. Must be a petroleum grade fuel line.
- 23) Fuel tank location: Outboard mounted fuel tanks must have metal protection, particularly grade fuel lines.
- 24) All Wing Classes must run Hoosier treaded tires, with D50 or D55 on the right rear.
- 25) No axle protrusion beyond the wheel rim. Max axle length 40".
- 26) Aluminum high back seats are MANDATORY. Must be securely mounted to the frame with no excessive holes. The top of the seat should be in the middle of the driver's head.
- 27) All karts must have seat belts and shoulder harnesses. Shoulder harnesses must be mounted in a way to restrict forward body motion independently of the seat. Lap belts should be mounted on the frame. Cut or frayed seat belts will not be allowed.
- 28) Approved neck braces and arm restraints are mandatory. Arm restraints must be attached to the lap belt and worn below the elbow.
- 29) Driving Apparel: Driving suits and gloves are required, SFI3-2A/1 min. Helmets and driving shoes are also required. See safety section (10.4) for equipment specifications.
- 30) No traction control devices allowed.
- 31) Kill switches should be within reach of the driver. RECOMMENDED but are not mandatory for 2024.
- 32) All karts must have a 6" nylon tie attached to spark plug wire.
- 33) All fuel line connections must be secured by clamps or similar.
- 34) All wing karts must display 10" numbers on the right and left side of the wing and 6" numbers on the tailpiece.

### **RBOX** - Clone, Ages 5-8, 245lb minimum

Drivers are not permitted to run R-Box Pro or BP classes.

Clone 196cc ONLY

ARC or Speed Karts .425 NO GO Green unaltered Restrictor plate only

Open dry clutches only / drum or disc / No jackshafts allowed

Fuel Pump Gas ONLY

**Engine rules 2023 NKA box stock rules will apply**

**\*\* Exceptions to NKA rules for RBOX class engines \*\***

**-Big pipe w/ 4104 muffler required. No loop pipes, Header pipe and muffler must meet 2023 NKA rules for Adult Box Stock classes, must be inside the roll cage and must exit towards the rear of the kart or must be approved prior to event by tech inspector or race director.**



**-Electric starter nut MAY BE used.**

**-Box Stock cast rod or Billet rod allowed, NO Titanium rods allowed.**

#### **ENGINE SPECIFIC TECH SHEET FOR: BOX STOCK 6.5 OHV**

**Description:** Single cylinder, 2 valve, OHV 4 cycle engine. (Gas Only) Must run a green .425 plate. 6.5 OHV – Fuel Pump Gas ONLY – Approved Engine: 6.5 OHV 196cc clone engine- No Kohlar, No Honda, No Predators. No aftermarket coatings of any type are permitted on any part of the engine (exception Blower Housing and Shrouds)

**Combustion chamber volume:** 26.5 cubic centimeter minimum, with piston at TDC, using prescribed procedure. The Liquid CC check is the official check

**Cylinder Head Requirements:** Must be OEM casting only. All cylinder heads must be the “JT” 4 bolt valve cover cylinder head (168-f 6.5hp GX 200 series) or the TG-1 head only. Porting and / or grinding are not permitted. Valve seats are two angles 45 degrees valve face and 30 degrees top relief. Intake seat maximum ID .897”, Exhaust seat maximum ID .862”. Outside face of the valve may not be below the floor of the combustion chamber (i.e. don’t sink the valves). Stock head bolts only, must have four. Head gasket(s) may be after market, must be of stock configuration, gasket thickness is a non tech item. Depth check between the valves, front to back and side to side may not vary by more than .005” max. No copper or aluminum gaskets allowed. Any stock configuration exhaust gasket allowed no other sealer.

**Block Requirements:** Stock cylinder bore is 2.685” max. Stroke is 2.123” + .010” or - .005”. No piston pop out allowed. Matting surface finish of block and cylinder head is a non-tech item, surfacing of both to correct gasket failure and meet cc check allowed however, no piston pop out is allowed. May use 2 side cover gaskets of stock configuration. Block must remain stock as produced. Stub for governor may be removed and hole plugged. No machining of blocks allowed. Welding to the block shall be for rod damage repair only and may not constitute a functional modification. Tillotson blocks allowed. Side cover bolts are non tech.

**Carburetor requirements:** Huayi OR RUXING model type carb only. Carb to intake sealer is gasket only no other sealer allowed. Choke must be as supplied from factory, but may be fixed to stay in open position. Venturi .615” NO-GO. Rear carb bore .751” NO-GO. Main fuel jet .042” NO-GO. Low speed idle jet is a Non-Tech item. Stock emulsion tube must be used and unaltered, .066” max ID (no pass through). Side holes in E-Tube 4 holes max in bottom section and 20 holes max in top section. Black Phenolic carb spacer is a non tech item but must be present. Minimum E-Tube length 1.092”. Throttle shaft - .115” minimum. Butterfly - .037” minimum. Aftermarket air filter adapter allowed (max length of 1.375).

**Valve Train:** Stock valve cover only with any stock configuration gasket, no sealer. Factory stock rocker arms 1:1 ratio and push rods only. Stock valves only 45-degree angle only both valves, Intake valve Max OD .982” +/- .005” and Exhaust valve Max OD .948” +/- .005”, no modifications allowed. Only Box Stock valve springs. (Installed Height for valve springs .815”, must be checked by using the .815” spring must go gauge with retainer seal in place on intake of an exhaust valve if used.) Prescribed check procedure as follows – Remove valve spring, reinstall spring retainer, insert .815” must go gauge in spring location. Gauge must go in both locations Intake and Exhaust with any allowed retainers in place, as raced, during check procedure. Max wire diameter on spring wire is .071” with a maximum tension of 10.8 lbs. at a height of .850”. Lash cap on exhaust valve only. Valve stem seal allowed on Intake and Exhaust valve, maximum lip thickness of .027”. Minimum thickness

of Intake retainer .230", Exhaust retainer .250". BS lifters only, no modifications allowed.

**Ignition system:** Stock Box Stock system only and must be unaltered. Low oil sensors may be disabled and removed.

**Flywheel:** Approved SFI certified billet aluminum flywheel only. No machining or alteration of any kind allowed. Minimum weight for the flywheel is 3.3 lbs. Any timing key or no key at all may be used. A flat washer or spacer may be used, and is recommended, between the flywheel and the nut. Handheld electric starter may be used, but the compression release mechanism must remain on the camshaft.

Current Approved flywheels: ARC 6619, ARC 6618, ARC 6689, Racing Flywheels RSP-13-075 Revwheel NF- S1 & RSP-13-077 Revwheel F-S1. If manufactured for use with a removable fan, the fan must be unaltered, attached and functional. Timing and flywheel key is non-tech.

**Header and Muffler Requirements - Big pipe w/ 4104 muffler required.** The Exhaust Pipe must be double nudded, or safety wired, and the silencer must be supported by a clamped-on brace to secure it in place. No modifications allowed.

**Piston and Rings:** Must be unaltered Box Stock only. Must have 3 rings. No machining of piston and rings allowed.

**Connecting Rod:** Stock Box Stock rod or billet. No machining of any type allowed.

**Crankshaft Requirements:** Stock Box Stock crankshaft required. Machining, polishing, addition of material or other alteration of the crankshaft is prohibited. Stock factory timing gear is mandatory and must be installed in its original location. Crankshaft journal diameter is 1.180" max - 1.168" min.

**Camshaft Requirements:** Stock camshaft cores only, ez-spin assy must remain as stock. Cam lobe base 25 circle diameter .865"  $-.005"/+.010"$  Duration check for Intake and Exhaust lobes (taken off pushrod). Intake duration of 219 degrees at .050 lift/86 degrees at .200 lift. Exhaust duration of 222 degrees at .050" lift/97 degrees at .200" lift. Max Intake lift on cam .225" – Min .215" lift taken at the pushrod. Max Intake lift at the valve .238" Taken on valve spring retainer with zero lash. Max Exhaust lift on cam .232" – Min .222" lift taken at the pushrod. Max Exhaust Lift at the valve .242" Taken on valve spring retainer with zero lash.

**Blower Housing Assembly:** pull starter must be present and remain stock. Pull starters may be rotated for a better crank angle. Aftermarket coating allowed.

**Fuel Tank Requirements:** stock tank must be removed. Floor mount or gravity fed- Must be approved by the promoter.

**Fuel Pump Requirements:** Fuel pump must be pulsed from either the crank case or the valve cover. You may install a flat metal plate in the original tank location for the purpose of mounting the throttle linkage and fuel pump.

+/- .005 or 2 degrees on all measurements to allow for gauge variances and wear. (All wing classes)

## **RBOX PRO** - Clone, Ages 8-11, 270lb minimum

Drivers are not permitted to run R-Box or BP classes.

Clone 196cc ONLY

ARC or Speed Karts .550 NO GO Blue unaltered Restrictor plate only

Open dry clutches only / drum or disc / No jackshafts allowed

Fuel Pump Gas ONLY

**Engine rules 2023 NKA box stock rules will apply**

### **\*\* Exceptions to NKA rules for RBOX class engines\*\***

**-Big pipe w/ 4104 muffler required. No loop pipes, Header pipe and muffler must meet 2024 NKA rules for Adult Box Stock classes, must be inside the roll cage and must exit towards the rear of the kart or must be approved prior to event by tech inspector or race director.**

**-Electric starter nut MAY BE used.**

**-Box Stock cast rod or Billet rod allowed, NO Titanium rods allowed.**

## **BP Wing** - Clone, Ages 9-13, 300lb minimum

Drivers are permitted to run BP and Intermediate Classes, provided they enter a kart unique to each class which meets all class requirements.

Clone 196cc ONLY

Pump gas only 87-91 octane only, NO Race gas or oxygenated fuel allowed. i.e., VP/Turbo Blue etc.

Open dry clutches only / drum or disc / No jackshafts allowed

### **CLS BP clone engine rules 2024**

6.5 OHV engines only / Spec GAS only / Approved engines: 6.5 -196CC clone engines ONLY. No Kohlar, No Honda, No Predators

The Box stock Tillotson engine will be allowed the 68MM reinforced Tillotson block will be allowed in this class, will be teched the same as any other 196CC clone block

**Description:** Single cylinder, 2 valve overhead 4 cycle engine. No cast iron sleeve or aftermarket coatings of any type are not permitted on any part of the engine(exception Blower Housing and shrouds). Unless noted within these rules. Figure guard, rear block tin, blower cover, recoil or blower fan cover are all required.

### **Cylinder head:**

Must be OEM casting only. All cylinder heads must be of the "JT" 4 bolt valve cover design. To include the Tillotson JT-207-cylinder head. The TG-1 Cylinder head will also be allowed. PORTING of the cylinder head is NOT permitted; this includes the valve guides in the port they may not be altered in any way. Port MUST be "as cast". Valve seats may have up to three angles, 45-degree face, 30-degree top relief, 60-degree bottom relief. Cutting of the valve seats allowed to insure proper seal. Intake seat maximum ID .897, Exhaust seat maximum ID .862, Outside face of valve may not below the floor of the combustion chamber. (Cannot sink the valves). Stock type head bolts must be used (four), head bolt washers allowed, Head gaskets maybe aftermarket, must be of stock type configuration, NO head studs allowed! No copper or aluminum head gaskets allowed. No predator head gaskets allowed. Gasket thickness is Non-Tech. Sealer "May Be" used to ensure proper seal of the head

gasket, more than one head gasket may be used to meet minimum cc rule. Depth between the valves front to back may not vary more than .005 max. Any stock configuration exhaust gasket may be used, sealer permitted. Header may also be run without gasket, sealer may be used rather than a gasket. Allen head bolts or other bolts of similar design allowed the secure header to cylinder head.

Breather hole in rocker cover may be tapped with ¼" pipe tap to accommodate breather fittings, no oversize drilling allowed. Factory stock internal pulse valves must be installed and operational in rocker covers. Rocker cover maybe drilled and tapped for pulse fitting to fuel pump

**Bore and stroke:** Stock bore is 2.685 and maybe over bored to 2.718 Stroke is 2.123 +0.010/-0.005

**Connecting rod:** MUST use a billet rod, may or may not have insert. No Titanium rods. Rod length is non tech.

**Combustion chamber volume:** 25CC Minimum. With piston at TDC using prescribed procedure (NKA). The liquid procedure is the official check. It may be checked only Once. Engine should be at room temp with valves closed / rocker arms removed from valves.

**Carburetor / intake requirements:** Stock Huayi or RUXING type, or Stock Tillotson PK1A only. Venturi .625 NO GO, Rear of carb bore .751 NO GO. Carb bore and finish is NON-TECH. Throttle shaft .115 Minimum, Butterfly .037 Minimum, Butterfly and throttle shaft must be stock and unaltered. Throttle shaft screw lock washer not required; throttle shaft screw length is non tech. Throttle shaft / butterfly retaining screw is required but non tech for head type. Air filter adapter of 1.375 maximum length is allowed. Gasket between adapter and carb body is required. No tech on thickness of gasket. Pulse type fuel pump is required, pump must be pulsed from rocker cover or crankcase ONLY. No fuel bypass allowed. Fuel line must go directly from the pump to the carb inlet. Must be of a single line. Fuel filter may be installed between the fuel pump and carburetor if desired. All fuel lines must be secured by using wire or plastic tie wrap. Any fuel line not secured will not be allowed to compete. This is a tech item! May be teched at any time during the race event or in tech after the race event. Failure to secure fuel lines will result in DQ. Black phenolic spacer must be used, minimum thickness .255, surface finish of bore and gasket surface is non tech. Choke assembly may be removed, hole for choke shaft must be plugged. Jets, air bleeds jets, and e-tube are Non tech. Stock intake runner gasket configuration only. One extra gasket must be used when using the restrictor plate. No other alterations allowed. No additional holes may be drilled in the carburetor body or phenolic spacer with the intent to change fuel or air delivery.

**Ignition system:** Ignition timing is Non tech. Stock ignition module (coil) must be used. Unaltered. No modifications allowed of any type. Stock factory spark plug boots must be used from the factory. Timing key is not required.

Kill switch within drivers reach from seat while strapped in is recommended but not required in 2023

**Piston:** Must be a stock dished piston with no modifications. Oversized clone or Honda dished pistons allowed up to .035 oversize. Rings must appear stock, all three rings must be installed. Piston may not pop out above block. NO piston pops out. Top of piston may not be machined or altered

**Valve train:** Stock valve train only in stock configuration except: Any single valve spring and spring shims allowed. No installed height check. Any 5.5mm stem steel or stainless-steel valve may be used. Intake valve head max diameter OD is .982 +/- .005, exhaust valve head maximum OD is .945 +/- .005, Valves must be one angle only, 45 degree, no knife edging of the valves, must have a minimum of 1 mm top margin. Valve length is non tech. No additional support of rocker arms / studs is permitted. Champion rocker arms and valve cover are

permitted but may not be modified in any way.

Stock type valve retainers with lash cap on exhaust side only or automotive type retainers with two valve keepers per valve may be used. Lash caps are not required but may be used with automotive type retainers and keepers. No minimum weight check on valves, retainers, or lash caps. NO TITANIUM valve train parts allowed. i.e., valves, retainers, keepers, or lash caps.

**Camshaft requirements:** Stock / factory camshaft cores only, EZ spin must remain functional and as stock. Duration check for intake and exhaust lobe taken off the push rod. Intake duration of 248 degrees at .050 lift/107 degrees at .200 lift, exhaust duration 247 degrees at .050 lift, 116 degrees at .200 lift. Max lift at the valve retainers (as raced) Intake .238, exhaust .242. Retainer may not be rotated.

**Crankshaft requirements:** Stock factory crankshafts only. Must have stock factory crank gear installed in stock location. May Not be welded to the crankshaft. No modifications to crankshaft allowed.

Aftermarket steel crankshaft bearings allowed. Must be of the non-self-aligning type. With or without a seal installed. NO Ceramic bearings allowed. Crankshaft journal diameter is 1.180-1.168 Min. Journal rod surface finish is NON tech.

**Block requirements:** Stock as cast block and produced with no modifications or alterations other than those specifically permitted in these rules. Block head matting surface may be machined; however, no piston pop out is allowed. Blocks **may be** welded or epoxied for repairs only. Under the flywheel or the front of the block only, no welding to the cylinder head matting surface is allowed. All bolt bosses in blocks may be drilled and tapped for repairs or other uses, Additional side cover gaskets as required for crankshaft thrust are permitted. All parts associated with the governor and low oil sensor may be removed and plugged. Side cover bolts are non tech. No studs and nuts allowed on the side cover. Solid dowel pins are allowed but must be of the OE size. Tillotson block allowed.

**Flywheel:** Any Legal 2023 NKA / SFI approved billet flywheel manufactured for the 196cc Clone engine only is allowed. No machining or alterations allowed. Minimum weight is 3.3lbs. Any timing key or no key at all is allowed. A flat washer or spacer may be used, and is recommended between the flywheel nut and flywheel. Handheld electric starter may be used but the compression release mechanism must remain on the camshaft and functional. If you choose to use an electric starter and your karts engine dies on the track we may choose not to restart it. If a flywheel is manufactured with a removable fan the fan must be unaltered, attached, and functional. Missing or damaged fins may result in a DQ in tech.

**Clutches Disc and Drum only allowed.**

**Header and muffler requirements:** Silencer/muffler must be B91XL round hole or Big pipe w/ 4104 muffler required. Muffler must be unaltered and must meet tech spec for stock class clones. Exhaust pipe / Header must be double nutted or retaining bolts must be drilled and safety wired. Headers must be supported by a minimum of one support brace. No loop pipes allowed. Header may be ceramic coated but must meet all requirements for 2023 NKA big pipe headers in the Box Stock adult clone rules. Muffler may not be welded to header pipe, muffler may not be painted or coated, Muffler does not need to be safety wired, muffler must be tight to header at post race inspection.

All readings +/- 0.0005 or 2 degrees to allow for gauge variances and wear. (All wing classes)

## **Intermediate Wing Open Clone** - Ages 12-16, 350lb minimum

Drivers are permitted to run BP and Intermediate Classes, provided they enter a kart unique to each class which meets all class requirements.

**Clone 196cc ONLY**

**Fuel type: Gasoline or methanol only (no exotic fuels or additives allowed)**

6.5 OHV – Approved Engines. 196cc Clone only, No Kohlar, No Honda, No Predators allowed **Engine spec sheet for Open Intermediate Clone class**

**Description:** Single cylinder, 2 valve overhead 4 cycle engines. No aftermarket coatings allowed or permitted on any part of the engine unless otherwise noted in these rules. (Header, blower housing, rocker cover, and shrouds are permitted). Cylinder head requirements: Must be OEM casting only. Any Clone JT casting, Tillotson JT-207, or TG-1 head will be allowed. Must be of the four-bolt valve cover type only. Intake valve seat maximum ID .897, Exhaust seat maximum ID .862.

**Bore and stroke:** Stock bore is 2.685 and maybe over bored to 2.718, Stroke is 2.123" +.010" or -.005

**Connecting rod:** Billet aluminum rods, with or without bearing inserts Required. No titanium rods allowed. Rod length is non tech.

**Carburetor:** Stock appearing 196cc Clone carbs only. No Honda carbs allowed. Huayi, Ruxing, or Tillotson PK series carburetors only. Internal filler of any type not allowed anywhere in the Carburetor.

**Ignition system:** Ignition timing is non tech. Stock 196cc ignition module / coil only. No modifications of any type allowed. Spark plug wire and boot / spark plug connector must be stock as supplied by the factory.

**Piston requirements:** Piston is allowed up to .035 oversize

**Valve train:** Intake valve head max OD. .982 +/- .005, Exhaust valve head max OD. .945 +/- .005

**Crankshaft requirements:** Stock factory 196cc crankshafts only with stock timing gear in factory location.

**Block requirements:** Stock 168F clone type block. Bracing / welding is allowed. No billet blocks, No Honda blocks, No Kohler blocks. 68MM Tillotson blocks are allowed.

**Flywheel:** Any SFI certified billet aluminum flywheel only. May NOT be modified or altered.

**Clutches:** DISC OR DRUM CLUTCHES ONLY ALLOWED.

**Header and Muffler Requirements:** Silencer / muffler must be B91XL round hole or RLV -4106. Exhaust pipe / header must be double nutted or safety wired. Header / silencer must be supported by clamped on brace to secure it in place. No loop pipes are allowed.

+/- .005 or 2 degrees on all measurements to allow for gauge variances and wear (All wing classes)

## Wing Kart Class Inspection List

Immediate Items must be fixed the same day. Secondary Items must be fixed by the following race date or the kart will be suspended from competition until fixed.

### 1) IMMEDIATE

- a) Helmet - fit/condition
- b) Seat belt & harness mounted
- c) Arm restraints – attached & arm restriction
- d) Verified Neck brace or Hans Device
- e) Brakes
- f) Suicide doors
- g) Steering link, lock nuts or cotter keys
- h) Protruding objects
- i) Axle Protrusion
- j) Fuel Line Location
- k) Spindles - Cotter Keyed Cage
- l) Frame, Nerf Bars, Bumpers, and Roll Cage
- m) Floor Pan Condition
- n) Seat-Condition/Mounting

### 2) SECONDARY

- a) Wing - Mounts
- b) Wheel Condition
- c) Rear Axle Keepers
- d) Hood & Tail Mounts
- e) Tailpiece Protection
- f) Number/Letter
- g) Chain Guard

Any official is permitted to remove karts from the racetrack due to unsafe conditions to the driver and/or other karts or disqualify a kart for safety violations. The safety crew and track official's decisions are final.

## Runestone GoKart Association Information

### **2024 RGKA Board Members**

- Josh Muzik
- Dominic Baker
- Stephanie Baker
- Kyle Sletto
- Ryan Nelson
- Andrew Steinert
- Daniel Moske

Email: [runestonegokartassn@gmail.com](mailto:runestonegokartassn@gmail.com)

Website: [www.runestonegokartassn.com](http://www.runestonegokartassn.com)

Facebook: Runestone Go Kart Association at Winning Edge Raceway